

## How to use AFUDOS Flash Utility by USB device

To update the BIOS file using the AFUDOS utility:

1. Visit the ECS website (<http://www.ecs.com.tw/>) and download the latest BIOS file for the motherboard. Extracted the BIOS file to a bootable USB device.

The extracted file list:

- BIOS file (eg. 070607s.ROM)
- AFUDOS.exe
- AFUWIN.exe
- DOS Flash Utility User Guide.pdf
- Ucoredll.dll
- Ucoresys.sys
- Ucorevxd.vxd
- UCOREW64.sys

2. Insert the bootable USB device into one of the USB ports of the computer.

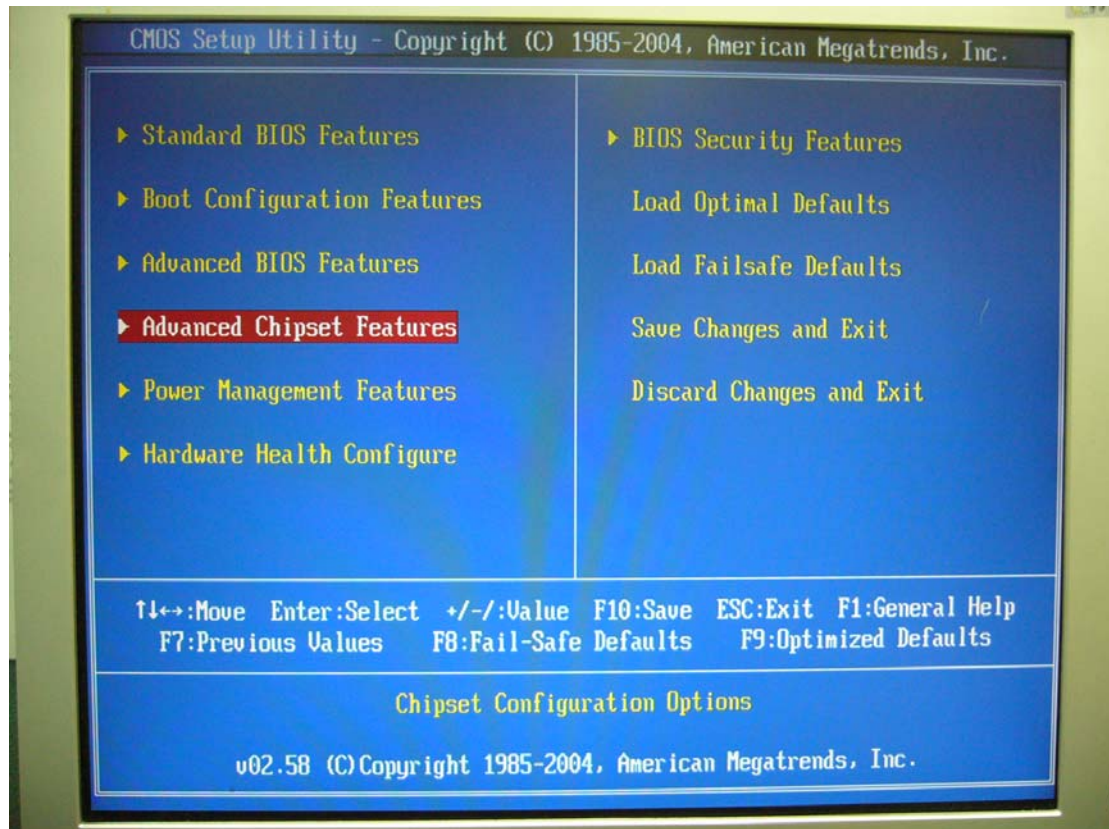


3. Enter CMOS Setup Menu by pressing [DEL] key.

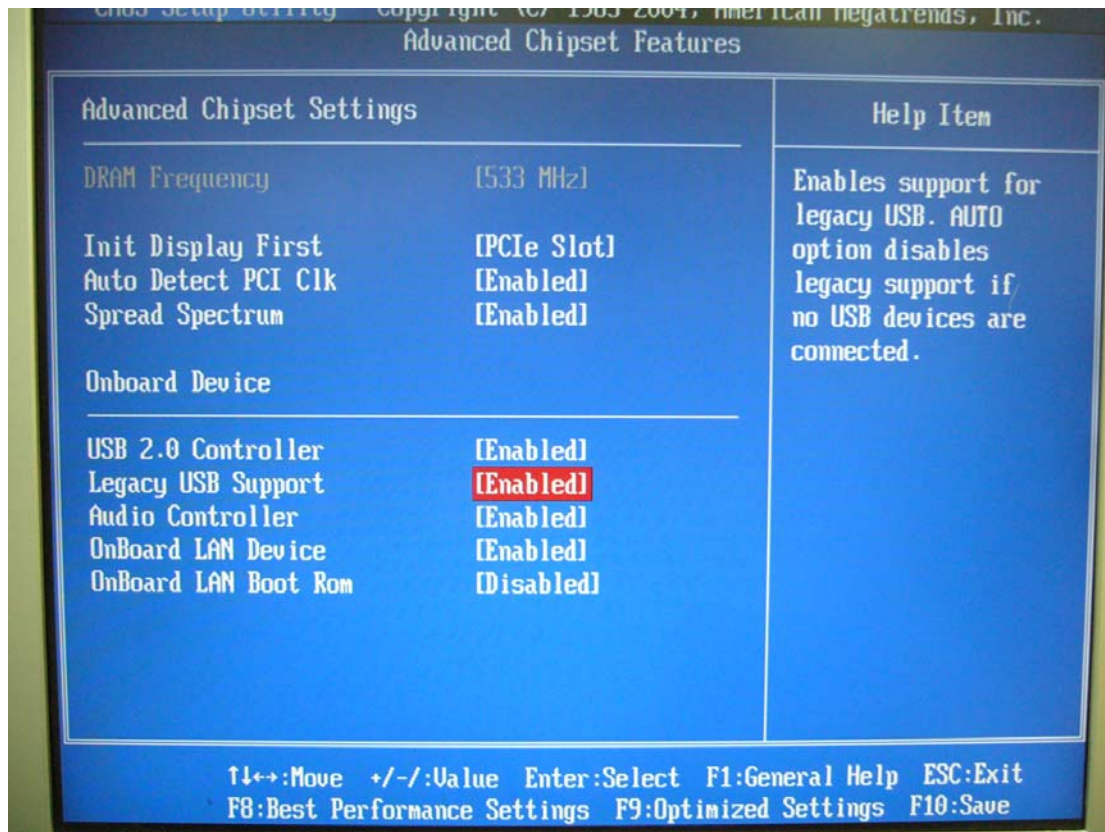


4. Highlight the “**Advanced Chipset Features**” item and set option “**Legacy USB Support**” as “**Enabled**”.

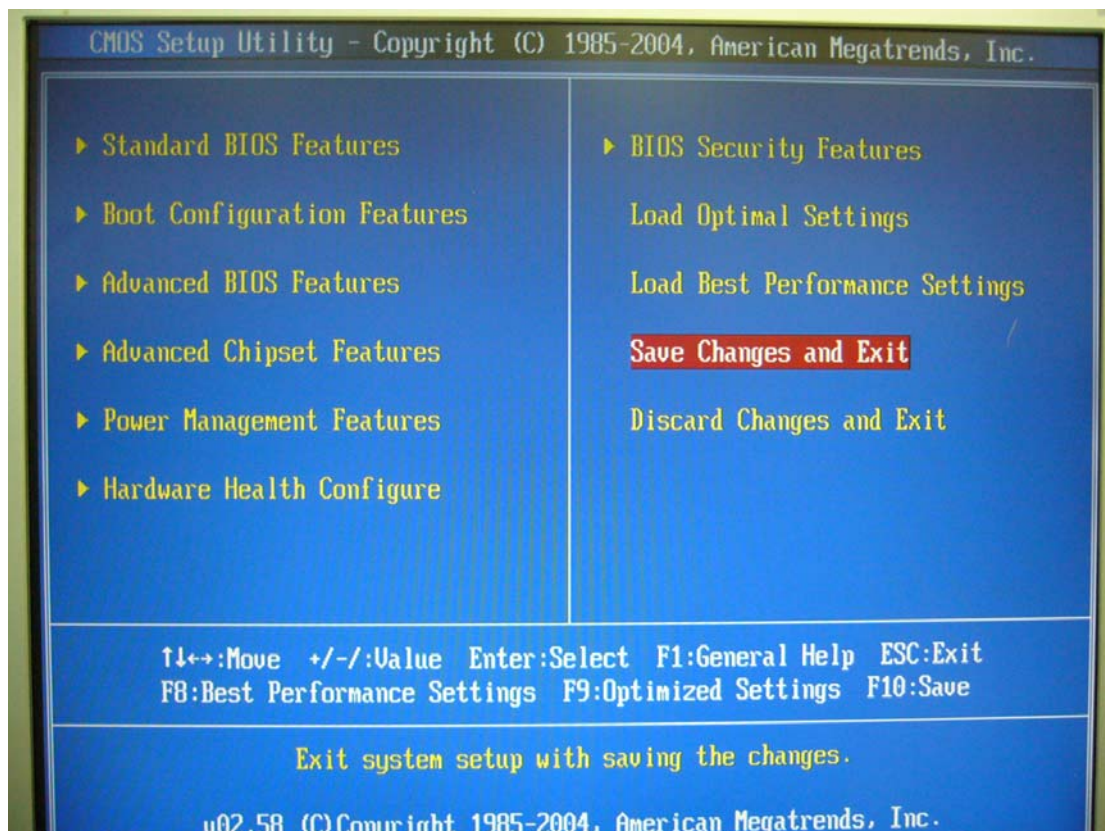
- Note: If this option is invisible in the CMOS Setup Menu, it means that Legacy USB Support is enabled by default.

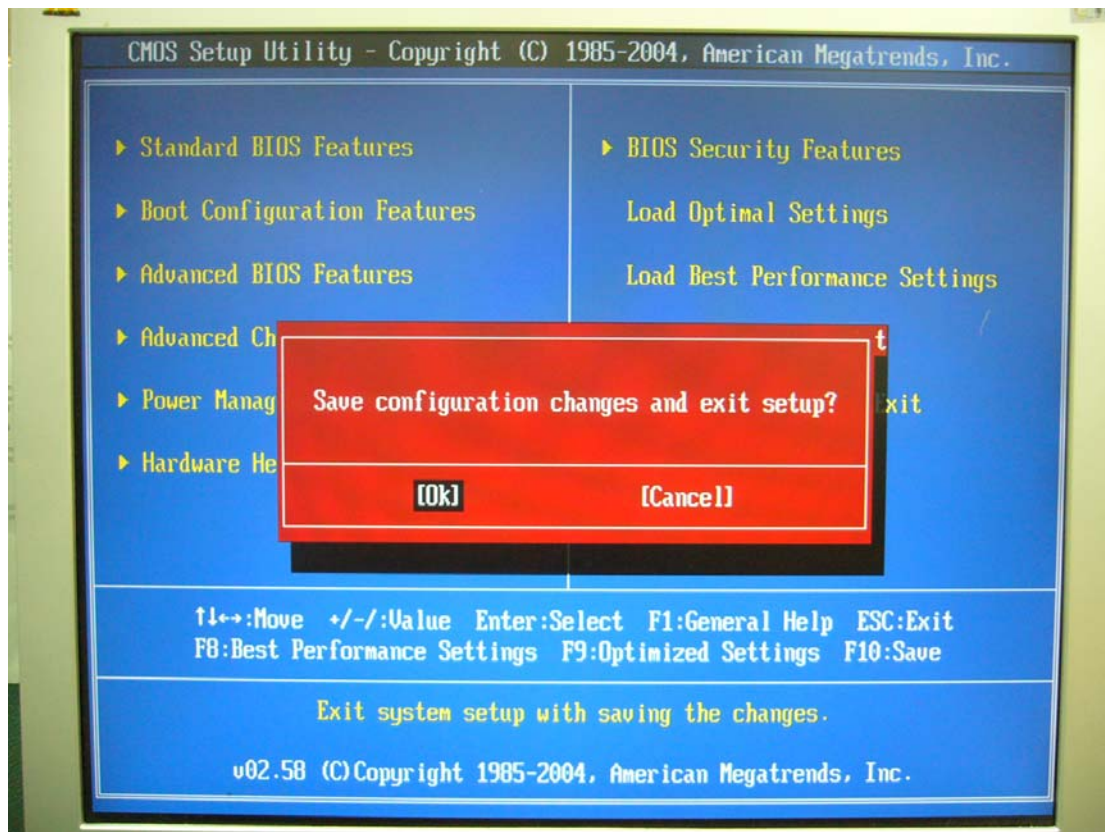






5. Highlight the **“Save Changes & Exit Setup”** item and press **[OK]** to confirm the changes (or just press **[F10]** key). And then the system will reboot to apply the new settings.





6. Open the Boot Menu by pressing **[F11]** key during booting.
  - Note: In some older motherboard, it will be **[F8]** key or some other keys to open the Boot Menu. It depends on the message displayed on the screen, as the figure shown below.



American  
Megatrends

AMIBIOS (C) 2005 American Megatrends, Inc.  
945PL-A Release 06/20/2007  
CPU : Genuine Intel(R) CPU 3.40GHz

Press F11 for BBS POPUP

The MCH is operating with DDR2 533/CL4 in Single-Channel Mode  
Initializing USB Controllers .. Done.

512MB OK

USB Device(s) : 1 Keyboard, 1 Storage Device

Auto-detecting USB Mass Storage Devices ..

Device #01 : JetFlash TS1GJFU20 \*HiSpeed\*

01 USB mass storage devices found and configured.

CMOS Checksum Bad

Press F1 to Run SETUP

0085



7. Select your bootable USB device in the Boot Menu and the system will boot into DOS system.



8. After booting the system into DOS mode, type the following command at the prompt to flash BIOS,

**afudos [filename] /p /b /n /c /x**

where [filename] is the latest BIOS file in the bootable USB device.

Note that, the filename of the BIOS file will always have an extension name as **ROM** (i.e. filename.rom). Take 070607s.rom for example, the command you should type at prompt will be

**afudos 070607s.rom /p /b /n /c /x**

Just as the figure below shows.

```
C:\>path=c:\command;c:\boxer;c:\masm611\bin;

C:\>lh doskey
DOSKey installed

C:\>afudos 070607s.rom /p /b /n /c /x_
```

9. The utility verifies the file and starts updating the BIOS.
- Note: DO NOT shut down or reset the system while updating the BIOS to prevent system boot failure!

```
C:\>path=c:\command;c:\boxer;c:\masm611\bin;

C:\>lh doskey
DOSKey installed

C:\>afudos 070607s.rom /p /b /n /c /x

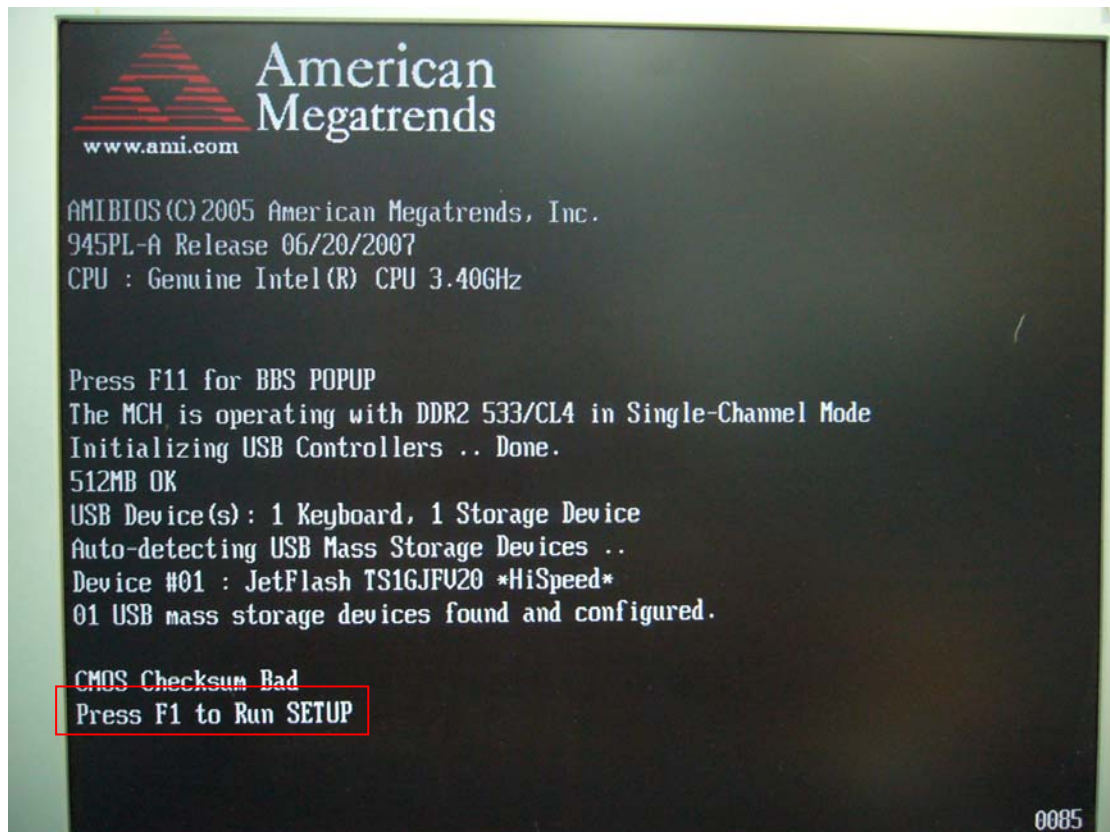
          AMI Firmware Update Utility Ver.4.08
    Copyright (C)2006 American Megatrends Inc. All Rights Reserved.

- Bootblock checksum .... ok
- Module checksums ..... ok
- Erasing flash..... done
- Writing flash ..... done
- Verifying flash ..... done
- Erasing NVRAM..... done
- Writing NVRAM ..... done
- Verifying NVRAM ..... done
- Erasing Bootblock .... done
- Writing Bootblock .... done
- Verifying Bootblock ... done
- CMOS checksum destroyed
- Program ended normally.

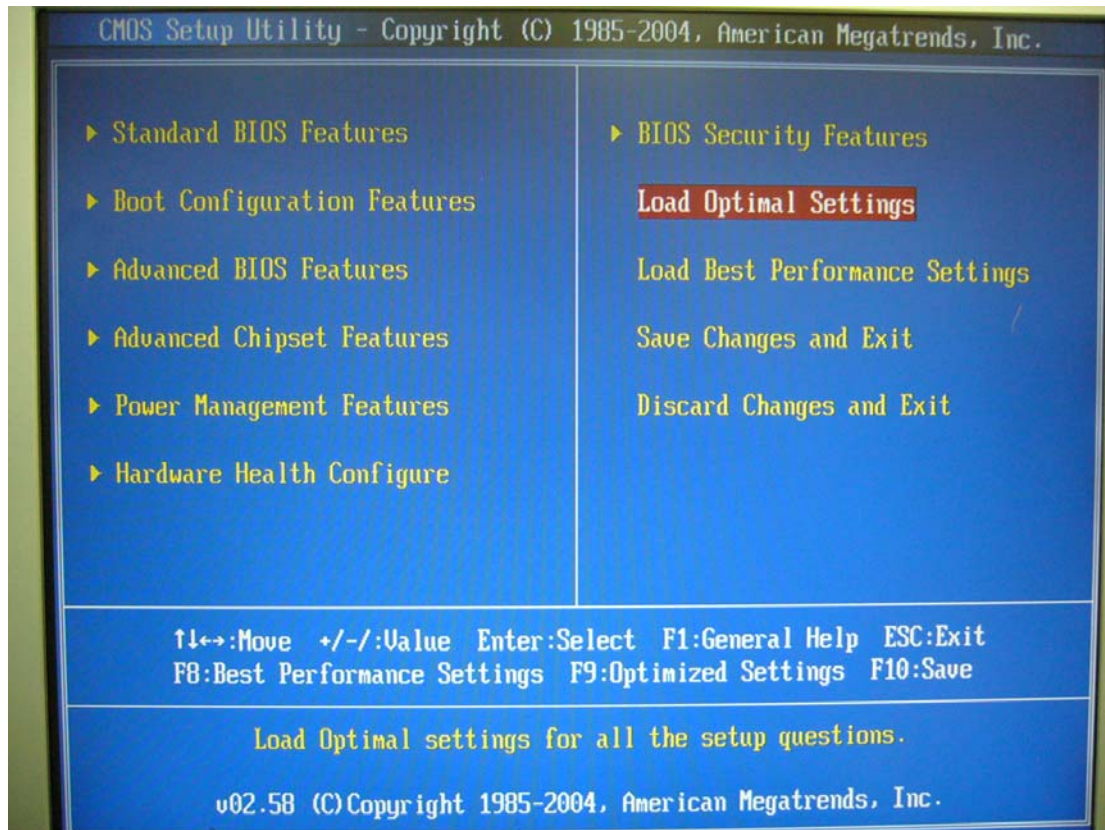
C:\>
```



10. The utility returns to the DOS prompt after the BIOS update process is completed.  
Reboot the system.
  - During the rebooting, the boot up screen will display your motherboard model and current BIOS version.
  - Note: The system will redetect all devices after BIOS has been upgraded. Therefore, we highly recommend reloading the BIOS defaults after BIOS has been upgraded. The steps for reloading the default values of BIOS are listed below.
  
11. Press **[F1]** key to enter CMOS Setup Menu during booting as the below message appearing on the screen.
  - Press F1 to Run Setup**
  - Note: For some motherboards, this message won't displayed, please press [DEL] key (or some other keys) to enter CMOS Setup Menu.



12. Use the arrow keys to highlight the item "**Load Optimum Settings**" and press [Enter]. System will ask "Load Optimal Defaults ([Ok] / [Cancel])?" Press "**[OK]**" to confirm.
- For some motherboards, the item would be "**Load Default Settings.**"



13. Highlight the "**Save Changes & Exit Setup**" item and press **[OK]** to confirm the changes (or just press **[F10]** key). And then the system will reboot to apply the default settings.